

reusable Classroom Sorting Poster

CA Content Standards addressed in this lesson/activity:

ELA: Vocabulary & Concept Development

1.17 Identify and sort common words in basic categories (e.g. colors, shapes, foods)

Science: Earth Science

3c. Students know how to identify resources from Earth that are used in everyday life and understand that many resources can be conserved

Math: Students sort and classify objects

1.1 Identify, sort, and classify objects by attribute and identify objects that do not belong in a particular group

Teacher Directions:

- **These sorting posters should be used with your students to review classroom recycling program procedures.**
- Post completed posters in your classroom or use for review as needed in a whole class or small group setting.
- Pass out picture cards to students.
- Choose one student at a time to come up to the posters and tell the class in which bin they would put that item.
- Use the list found on the back of this poster to check if students are accurately sorting the materials.

These materials are shared by the Alameda County Office of Education's Service-Learning Waste Reduction Project, funded by StopWaste.Org, <http://schools.stopwaste.org>, and adapted for SDUSD's recycling programs.

Teacher Key

For use with the
Classroom Recycling Sorting Poster
Please store on back of poster.

Plastic bags should be reused, recycled at grocery stores, or thrown in trash

Brown Bin

Landfill



Reuse Bin

For Sharing

Blue Bin

Recycling



non-working markers & pens

paper towels & tissue

plastic wrap

granola bar wrapper

straw

broken pencils

glue containers (not empty)

broken crayons

plastic bag

laminated paper

paper cups



reusable pens & markers

paper (used on one side only)

glue containers (not empty)

books



empty tissue box

paper (used on both sides)

empty glue containers



Recycling Remember:

- All paper and cardboard products can be recycled (including metal & plastic bindings, construction paper, poster paper, etc.)
 - NO PAPER TOWELS or tissue in Blue Bin!
 - NO laminated paper, wax lined paper, paper cups
- All RIGID plastics can be recycled (bottles, jugs, jars, tubs, baskets, crates, toys, "party cups," clear plastic clamshells from take-out, microwave trays/bowls & plastic food containers).
 - NO film plastic, straws, plastic cutlery, bubble wrap, etc.



**non-working
markers &
pens**



**paper towels
& tissue**



**broken pencils
& shavings**



plastic bag



**laminated
paper**



**broken
crayons**

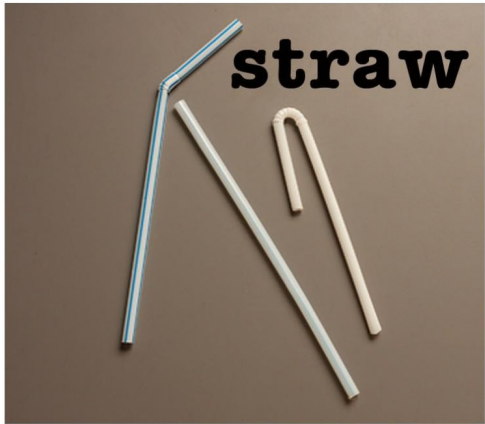
**granola bar
wrapper**



paper cups



plastic wrap



plastic bags

NO
Recyclables



erasers



calculator



crayons



**reusable
pens &
markers**



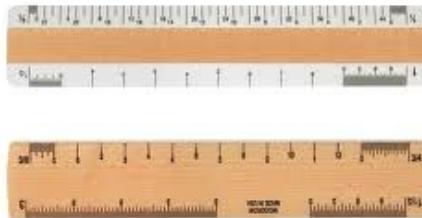
**glue containers
(not empty)**



notebooks



scissors



rulers



books

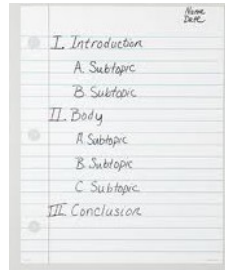
Use with Classroom Sorting Poster—Reuse Bin (yellow)



**paper (used on
one side only)**



empty tissue box



paper (used on both sides)



poster & construction paper



magazines



used binders



paper bags



Cardboard (some food residue OK)



plastic bottles & cups



plastic items



**empty glue
containers**

**NO
FOOD**

**NO
TRASH**

reusable Lunch Waste Sorting Poster

CA Content Standards addressed in this lesson/activity:

ELA: Vocabulary & Concept Development

1.17 Identify and sort common words in basic categories (e.g. colors, shapes, foods)

Science: Earth Science

3c. Students know how to identify resources from Earth that are used in everyday life and understand that many resources can be conserved

Math: Students sort and classify objects

1.1 Identify, sort, and classify objects by attribute and identify objects that do not belong in a particular group

Teacher Directions:

- **These sorting posters should be used with your students before starting the lunch time recycling program.**
- Post completed posters in your classroom or use for review as needed in a whole class or small group setting.
- Pass out picture cards to students.
- Choose one student at a time to come up to the posters and tell the class in which bin they would put that item.
- Use the list found on the back of this poster to check if students are accurately sorting the materials.

These materials are shared by the Alameda County Office of Education's Service-Learning Waste Reduction Project, funded by StopWaste.Org, <http://schools.stopwaste.org>, and modified for SDUSD's recycling programs.

Teacher Key

For use with the
 “Lunch Waste Sorting Poster”
 Please store on back of poster.



Liquids

Empty All Liquids

Liquids collection is optional & may not be part of your school’s program. If not, instruct students to empty liquids in the trash (Gray Bin) before recycling.

Gray Bin

Landfill



Green Bin

Fruit & Veggies Only



Blue Bin

Recycling

NO FOOD





chip bag



drink pouch



plastic wrap



yogurt tube wrappers

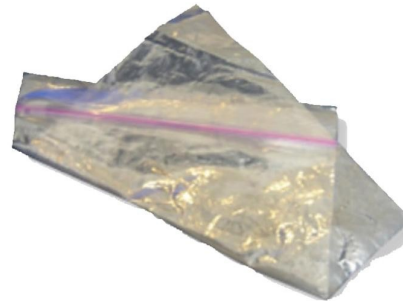
napkins



straw



plastic utensils



plastic bag



styrofoam

Use with Lunch Waste Sorting Poster— Gray Bin (landfill)

candy & granola wrappers



orange

Note: Most sites do not compost citrus fruits because the acidity is too high for worms to digest and break down.

Note: No Meats & Cheese is for Green Bin Poster (for fruits & veggies only).





peas



salad



grapes



apple



banana



carrots



fruit



broccoli



**fruit & veggie
scraps**



**EMPTY
plastic
bottles**

**cardboard
box**



plastic tray



**EMPTY
drink boxes
& cartons**



**plastic food
bowl or tray**

**clean
paper**



**aluminum
can and foil**



**empty plastic
containers**

**aluminum
tray**



plastic cups



drink pouches

Note: Some sites collect drink pouches separately for recycling through Terracycle. Otherwise, these items must be thrown in the trash.



drink boxes & pouches

NO TRASH

NO Liquids

For Liquids Collection Program



milk



juice



water

Teacher Key

For use with the
 “Lunch Waste Sorting Poster”
 Please store on back of poster.

Please instruct your students to:

- Recycle at lunch time. Remind them prior to dismissal for lunch.
- Empty food and liquids in the trash prior to recycling.
- Whack & stack their lunch trays.

Gray Bin

Landfill



Gray Bin

Landfill



Blue Bin

Recycling





chip bag



drink pouch



plastic wrap



granola bar wrapper



yogurt tube wrappers



straw



plastic utensils



plastic bag



styrofoam

candy bar wrapper



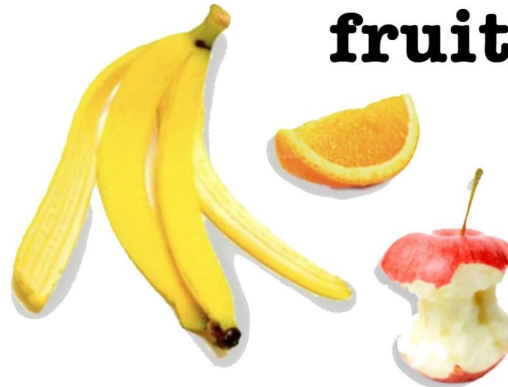
salad



dirty paper cup



pizza



fruit

napkins



quesadilla



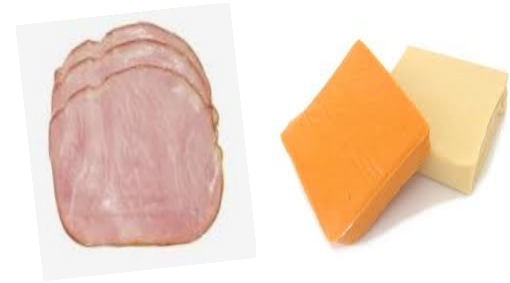
chicken patty sandwich



**chicken
nuggets**



turkey & gravy



**meat &
cheese**



**teriyaki
chicken**

NO
Recyclables



**EMPTY
plastic
bottles**

**cardboard
box**



plastic tray



**EMPTY
drink boxes
& cartons**



**plastic food
bowl or tray**



**clean
paper**

**aluminum
can and foil**



**empty plastic
containers**

**aluminum
tray**



plastic cups



drink pouches

Note: Some sites collect drink pouches separately for recycling through Terracycle. Otherwise, these items must be thrown in the trash.

NO TRASH

NO Liquids



**mashed
potatoes**



raisins



rice



rolls



**bread &
crackers**